

## FUSION 10.4

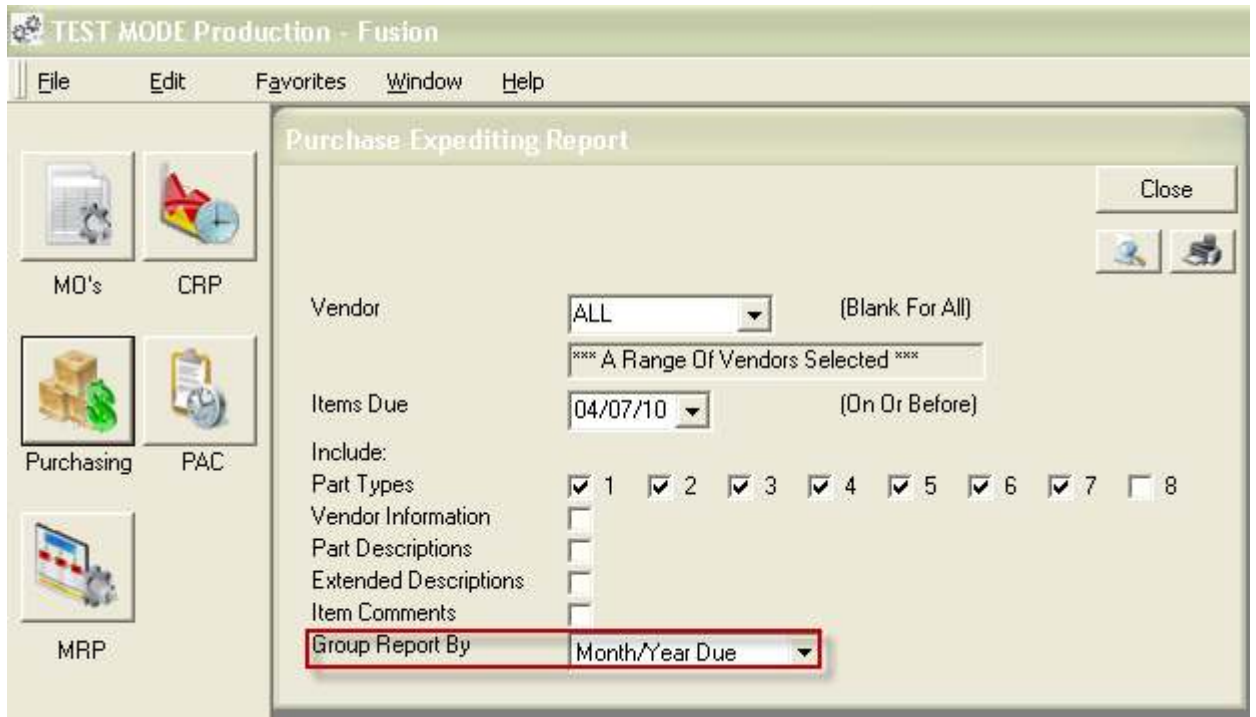
With the release of Fusion 10.4 Key Software has standardized the numbering sequence of the release to correspond to the current Year/Month - 10.4 = 2010.April release

User help instructions are now included with this update. They must be accessed from the shared ESIERP folder on your server or through the Fusion website

<http://www.fusionerp.net/customer-login/>

### Added Features

- Parts that are on dock are now noted on the MRP and Purchasing Expedite Reports.  
*PRODUCTION>MRP>VIEW>MRP REQUIREMENTS.*  
*PRODUCTION>PURCHASING>VIEW>PURCHASE ORDER EXPEDITE.*
- Part availability report now includes option to use the schedule date or the customer request date. SALES>ORDER PROCESSING>VIEW>PART AVAILLIBILTY REPORT
- Revising a purchase order delivery date now has the option to keep the original ship date for reporting on time delivery score. PRODUCTION>PURCHASING>EDIT>REVISE A PURCHASE ORDER
- Revising the revision letter of a routing now clears the approval field and approval date field requiring the new revision to be approved.  
ENGINEERING>ROUTING>EDIT>ROUTING
- **Added look up by monthly total of open purchase orders and received purchase orders.**  
**PRODUCTION>PURCHASING>VIEW>PURCHASE ORDER EXPEDITE.**  
**INVENTORY>RECEIVING>VIEW>RECEIVING LOG**



Fusion

Printed 4/7/10 1:26PM  
Requested By: MGR

Page 1 of 14

### Purchase Expediting Report by Due Date

Open Items Scheduled For Receipt On Or Before 04/07/10 Types 1 2 3 4 5 6 7

# = On-Dock

Date Due	Part Number/Description	PO Number	Item	Quantity	Uom	Cost	Total
<b>December 2007</b>							
<b>GAM100 1572GAMMA ENGINEERING, INC.</b>				<b>Phone: 817-477-2193</b>			
12/27/07	450-061-526-9104	307644	4A	3.000	EA	1,078.0000	3,234.00
<b>December 2007 Vendor GAM100 Total</b>							<b>3,234.00</b>
<b>December 2007 Total</b>							<b>3,234.00</b>
<b>May 2008</b>							
<b>NEL700 1697PARK ADVANCED COMPOSITE MATERIALS, INC.</b>				<b>Phone: 203-755-1344</b>			
5/23/08	SETUPCHARGE	307383	3A	1.000	EA	370.0000	370.00
5/23/08	SETUPCHARGE	307383	4A	1.000	EA	300.0000	300.00
5/23/08	TEMPRECORDER	307383	5A	1.000	EA	40.0000	40.00
<b>May 2008 Vendor NEL700 Total</b>							<b>710.00</b>
<b>TCS100 238T C Specialties, Inc.</b>				<b>Phone: 714-524-4490</b>			
5/16/08	TESTREPORTCHARGE	308182	3	1.000	LT	25.0000	25.00
5/16/08	NON-INVENTORY	308182	4	1.000	EA	30.0000	30.00
<b>May 2008 Vendor TCS100 Total</b>							<b>55.00</b>
<b>UNI500 1161UNIVERSAL AEROSPACE</b>				<b>Phone: 360-435-9577</b>			
5/27/08	#900F2421545-105	306167	29A	3.000	EA	0.0100	0.03
<b>May 2008 Vendor UNI500 Total</b>							<b>0.03</b>
<b>May 2008 Total</b>							<b>765.03</b>

- Added look up of sales order number by customer purchase order number. Removed edit function of the sales order from the view look up field to control edit permissions.  
SALES>ORDER PROCESSING>EDIT>REVISE A SALES ORDER

TEST MODE Sales - Fusion

File Edit Favorites Window Help

Order Processing Packing Slips Bookings/Backlog Commissions

### Revise Sales Order

Sales Order: S 09310

**PO Number: 57751-OP**

Customer: MDH100 MD HELICOPTERS, INC

General Shipping Other

Booking Date: 04/01/10 Default Delivery Date: 04/12/10

Default Ship Date: 04/07/10 Purchase Order Number: 57751-OP

Payment Terms: 12.00 % 1 Net 0

Taxable:  Tax Exempt Number: 07-238008-A

Division: 01 Region: 01

Business Unit: Discount: 0.00 %

Salesperson: MDHI MD HELICOPTERS

Contact: PETE ROSE

Contact Phone: 508 223-444-4444 Ext: 0 Fax: 508 234-987-6666

Price Book: Expires:

Close Items New

## Updates

- All reports in the all Modules are now updated to the latest viewer. (Some Finance reports still use the older viewer) Allows the user copy, paste, search, jump to page capability.
- When an inventory transfer is used the lot cost for transfer is by default copied to the transfer item. INVENTORY>LOT TRACKING>EDIT>INVENTORY TRANSFER
- Modified MRP requirements logic to not group detail component requirements. PRODUCTION>MRP>VIEW>MRP REQUIREMENTS
- When receiving an item you can now click on the item being received to open the item extended description and comments. INVENTORY>RECEIVING>EDIT>RECEIVE PO ITEMS
- Corrected the sort order of items on a PO when they are received. INVENTORY>RECEIVING>EDIT>RECEIVE PO ITEMS

- Late MO's by operation report look up has been refined. PRODUCTION>PAC>VIEW>LATE MO's BY OPERATION
- Canceling a pick list on a closed MO was resetting the status to PP. This has been corrected to show pop up that MO is completed or closed.
- 12 month backlog past total was incorrect beyond current month look up. SALES>BOOKING/BACKLOG>VIEW>12 MONTH BACKLOG
- Adding an item to a printed packslip, next item on the sales order was rounding the sales price – corrected. SALES>PACKINGSLIP>EDIT>ADD AN ITEM TO A PRINTED PACKSLIP
- Unshipped packing slip report shows date range.
- Revised logic to include revised PO information reference on MO operation.

